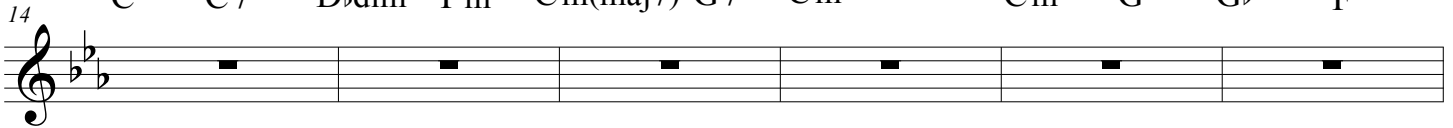
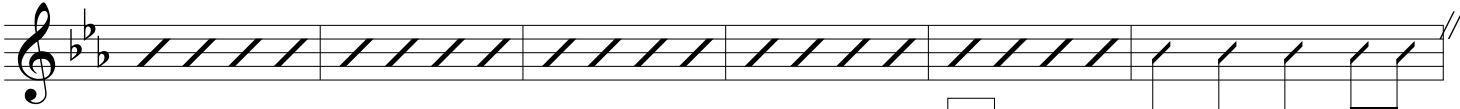
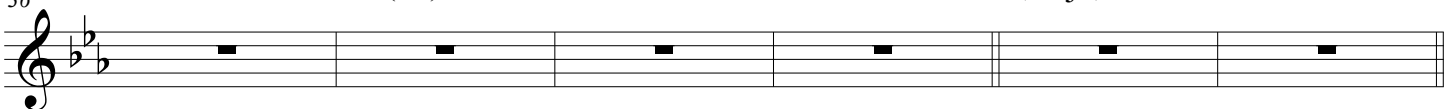
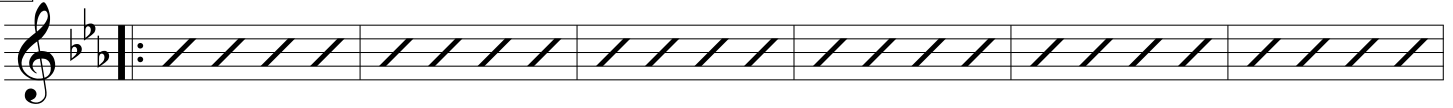
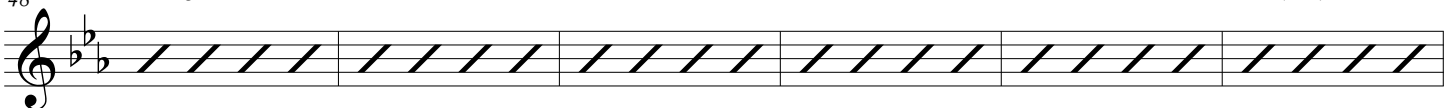


Night on Westridge

dl

ACm G G \flat F Fm Cm7 Cm7(b5) G**B**C C7 D \flat dim Fm Cm(maj7) G7 Cm Cm G G \flat FFm Cm7 Cm7(b5) G C C7 D \flat dim Fm Cm(maj7) G7 Cm**C**A \flat maj7 Dm7(b5) Fm6 Gm/B \flat A \flat 6 Gm A \flat /G \flat D7(#11) G7**D**Cm G G \flat F**To Coda**Fm Cm7 Cm7(b5) G C C7 D \flat dim Fm Cm(maj7) G7 Cm**Solos****E** Cm G G \flat F Fm Cm7 Cm7(b5) G C C7 D \flat dim FmCm(maj7) G7 Cm Cm G G \flat F Fm Cm7 Cm7(b5) G

F

54 C C7 D \flat dim Fm Cm(maj7) G7 Cm A \flat maj7 Dm7(b5) Fm6

60 Gm/B \flat A \flat 6 Gm A \flat /G \flat D7(#11) G7 D7 G7

G Cm G G \flat F Fm Cm7 Cm7(b5) G C C7 D \flat dim Fm

72 Cm(maj7) G7 Cm **H** Shout Chorus Cm G G \flat F Fm Cm7 Cm7(b5) G

78 C C7 D \flat dim Fm Cm(maj7) G7 Cm G G \flat F

84 Fm Cm7 Cm7(b5) G C C7 D \flat dim₃ Fm Cm(maj7) G7 Cm D.S. al Coda

90 Cm G7 Cm A7 G7 D7 Cm G7

96 Cm